

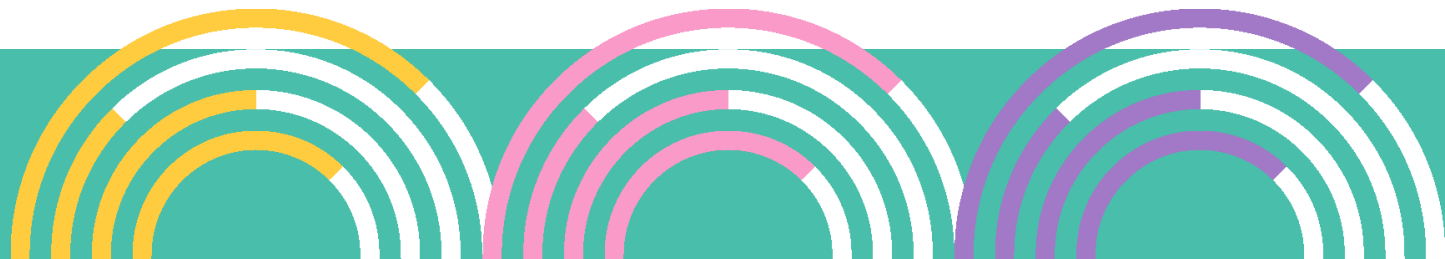


Healthy
Workplaces

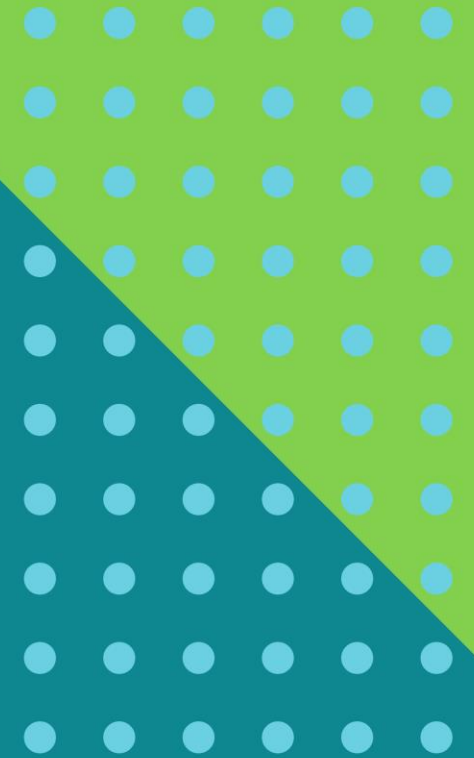
Paul Findlay

WHS Advisor, Education Team
SafeWork SA

Supporting your
state of wellbeing



People at Work



Psychological health in the workplace

- 91% believe mental health in the workplace is important
 - BUT - Only 52% believe their workplace is mentally healthy
- 60% working in a mentally healthy workplace were more committed to their job
 - BUT - Almost 50% of employees have left a workplace due to a poor mental health environment

Psychological health in the workplace

- Mental health concerns have increased from 20 to 30% since COVID-19 and are anticipated to continue increasing
- Businesses receive an average return on investment of \$2.30 per \$1 invested in **effective workplace mental health strategies**, a win-win situation for employers and employees

What is People at Work?

- Australia's only validated and evidence-based psychosocial risk assessment survey tool with benchmarking
- Suitable for businesses with more than 20 workers

Nationally available via a **digital platform** consisting of resources, interactive learning modules and automated custom reports
– **all for free.**

How Does It Work?

- A five step process to identify, assess and control risks to psychological health at work.



Background

- Began in 2007 as a research project between UQ, ANU and WHSQ. People at Work is now a national collaboration between the health and safety regulators.
- The overall aim was to develop a validated psychosocial risk assessment tool.
- People at Work has evolved from a 40 minute paper-based survey, to a 10-15 minute online tool that automatically generates a custom report.

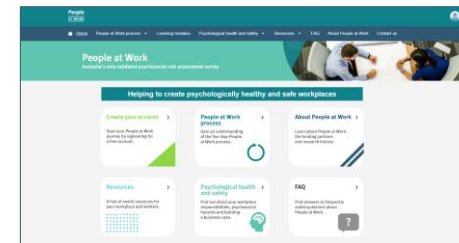
The People at Work *digital* solution



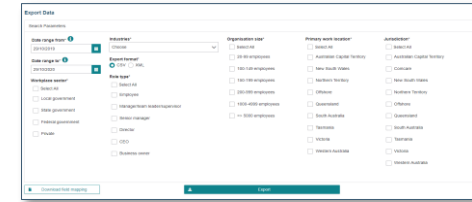
Australian workplaces



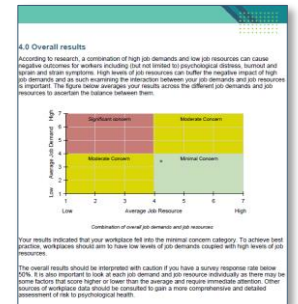
Online resources



Australia's only psychosocial risk assessment survey



Industry benchmarking



Custom survey reports

People
AT WORK

Benefits of People at Work

These include:

Helps to
comply
with
WHS

Helps to
prevent
psych
hazards

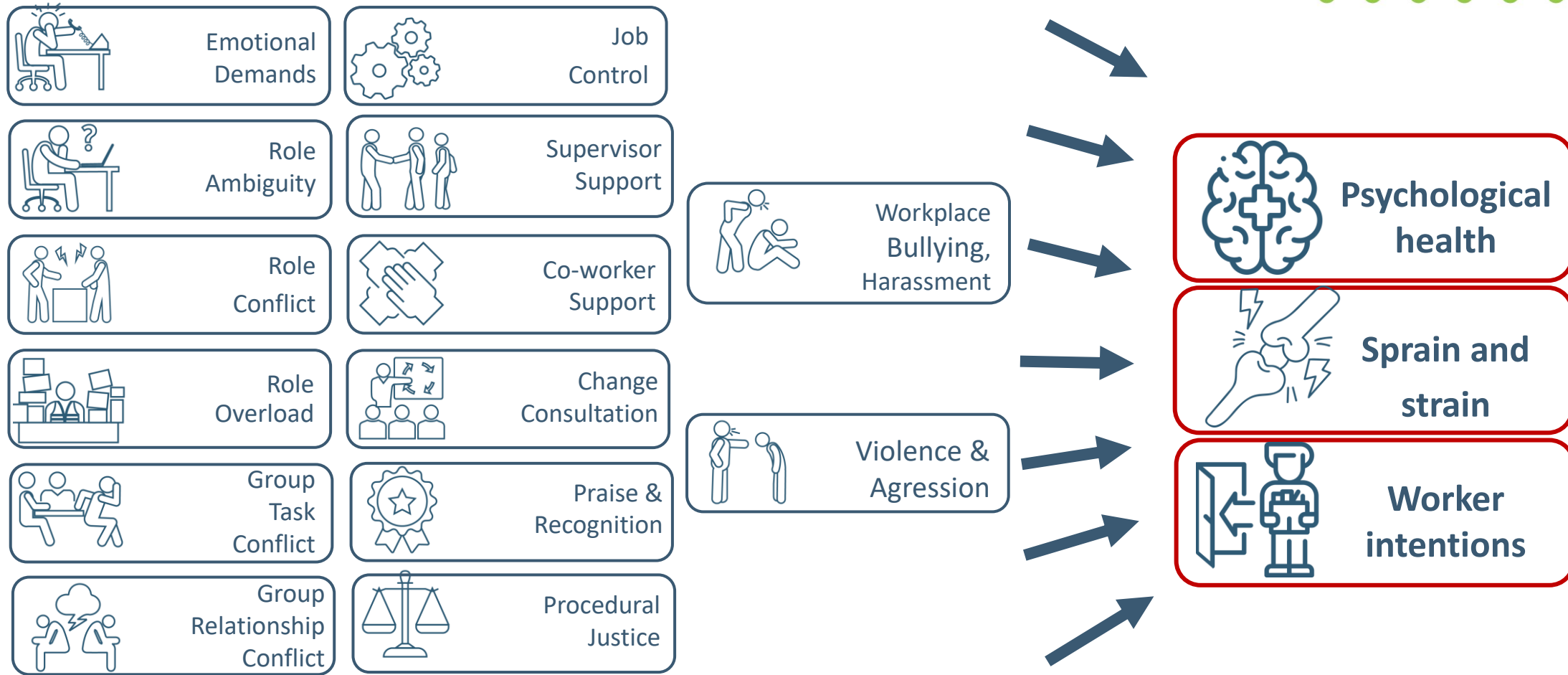
Consult
about
psych
risks

Reduce
workers
comp


Improve
productivity,
satisfaction
&
engagement

Lets
workers
know that
their
psych
health
and safety
is
important

What does People at Work measure?



Number of Registered Organisations

Jurisdiction	Organisations registered 
Australian Capital Territory	56
Comcare	119
New South Wales	548
Northern Territory	12
Offshore	0
Queensland	537
South Australia	170
Tasmania	94
Victoria	297
Western Australia	194
Total	2027

People at Work

Australia's only validated psychosocial risk assessment survey



Helping to create psychologically healthy and safe workplaces

Create your account >

Start your People at Work journey by registering for a free account.

People at Work process >

Gain an understanding of the five step People at Work process.



About People at Work >

Learn about People at Work: the funding partners and research history.

Resources >

A hub of useful resources for your workplace and workers.



Psychological health and safety >

Find out about your workplace responsibilities, psychosocial hazards and building a business case.



FAQ >

Find answers to frequently asked questions about People at Work.



Questions



www.peopleatwork.gov.au

People
AT WORK